



ALTECH

For Industrial Handling Solutions

www.altech-eg.com

BUSINESS
COMPANY PROFILE

2023



ALTECH

For Industrial Handling Solutions

Index

Introduction Page 2 - 5

About Altech Page 6 - 17

About AltechGreen Page 18 - 22

Altech Capabilities Page 23 - 28

Our Achievements Page 29 - 32

Contact us Page 33 - 34



SOLUTIONS FOR HANDLING

Efficient handling services, particularly those facilitated by industrial equipment such as forklifts, are integral to achieving optimal productivity across various industries. The robustness of forklifts makes them indispensable in warehouse operations, manufacturing facilities, construction sites, and other industrial settings. Below are some critical components of handling services offered by industrial equipment like forklifts.



SOLUTIONS FOR HANDLING

Here are some key aspects of handling services provided by industrial equipment like forklifts:



Material handling: Is a crucial aspect of industrial operations, and forklifts play a significant role in this domain. They are primarily utilized for the lifting, movement, and stacking of materials. These machines are equipped with robust forks or attachments capable of handling diverse loads, including equipment, raw materials, pallets, and containers. Forklift operators undergo training to ensure the safe and efficient maneuvering of the equipment during transportation of goods from one location to another.

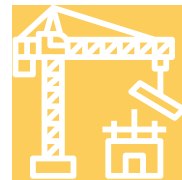


Warehouse Operations: Efficient warehouse operations are contingent on the strategic use of forklifts. These machines aid in swift loading and unloading of trucks, facilitate optimal organization of materials within the warehouse, and help maximize storage capacity. Forklifts with specialized attachments, such as clamps or rotators, are particularly useful for handling unique goods like barrels, coils, or oversized items.

SOLUTIONS FOR HANDLING



Inventory Management: Effective inventory management is critical for any business, and forklifts, in combination with inventory management systems, are instrumental in achieving this objective. These versatile machines streamline the movement of goods between storage areas, assist in conducting stock audits, and ensure proper handling and storage of items. Forklifts equipped with height-adjustable masts or reach trucks are especially beneficial in retrieving inventory from high shelves.



Construction and Heavy Industries: Forklifts play a crucial role in construction sites and heavy industries, aiding in the lifting and positioning of heavy materials such as steel beams, pipes, and concrete blocks. For outdoor construction projects, rough-terrain forklifts, engineered for enhanced stability and traction, are capable of operating on uneven surfaces.



ABOUT

ALTECH

For Industrial Handling
Solutions



Dear Valued Partners and Clients,

As the CEO of **ALTECH** company, it is my privilege to welcome you to our company profile. We are an industry-leading provider of comprehensive handling solutions, dedicated to delivering excellence in every aspect of our operations.

At **ALTECH**, our core mission is to provide innovative and tailored handling solutions that optimize industrial processes and enhance operational efficiency. With a steadfast commitment to quality, reliability, and customer satisfaction, we have established ourselves as a trusted partner in the industry.

With a team of highly skilled professionals and a wealth of industry experience, we pride ourselves on our ability to deliver cutting-edge solutions that meet the unique needs and challenges of our clients. Our comprehensive range of services, coupled with our state-of-the-art technologies, enables us to design, engineer, and implement handling solutions that drive productivity and maximize return on investment.

We understand that success in today's competitive landscape requires not only technical expertise but also a customer-centric approach. Therefore, we prioritize open communication, collaboration, and a deep understanding of our clients' requirements. By forging strong partnerships, we strive to provide tailored solutions that exceed expectations and contribute to the long-term growth and success of our valued clients.

As we continue to evolve and innovate, we remain dedicated to staying at the forefront of industry advancements and emerging technologies. This commitment ensures that our clients benefit from the latest developments in handling solutions, keeping them ahead in an ever-evolving marketplace.

I would like to express my gratitude to our esteemed partners and clients for their trust in our capabilities and for choosing **ALTECH** as their preferred handling solutions provider. We look forward to building enduring relationships, delivering exceptional results, and playing a pivotal role in the growth and success of your operations.

Thank you for your continued support.

Sincerely,

Eng. Ali Hamed
CEO, **ALTECH** company



ALTECH

For Industrial Handling Solutions

ALTECH Supplies, Engineering and Industrial Services came into existence in 2017. With its significant accomplishment in executing diverse supply contracts and providing top-notch after-sales services, the company has established its credibility in the market. ALTECH Supplies specializes in the supply of cranes of all types, spare parts, and maintenance services.

YOUR SUCESS MOVEMENT ENGINE



ABOUT

ALTECH

For Industrial Handling
Solutions

**YOUR
SUCCESS**

MOVEMENT

ENGINE

YOUR SUCCESS MOVEMENT'S ENGINE



Vision

Being a master provider of handling solutions in MEA

Mission

Our mission is to revolutionize the handling services sector by leading the way in implementing sustainable practices. Our aspiration is to become the go-to partner for businesses seeking environmentally conscious handling solutions. Through our commitment to innovation, collaboration, and sustainability, we aim to create a future where efficient handling services operate in harmony with the preservation of our planet.

Professional Principles



Environmental Stewardship

ALTECH is dedicated to preserving the environment by implementing sustainable technologies, utilizing renewable energy sources, and adopting eco-friendly practices. It aims to decrease greenhouse gas emissions, minimize its impact on natural resources, and leave a positive environmental legacy.



Collaboration and Partnerships

We actively collaborate with clients, suppliers, and industry stakeholders to foster a culture of sustainability. By sharing knowledge, expertise, and best practices, we can collectively drive positive change. Through strategic partnerships, we aim to develop innovative solutions that address environmental challenges and promote sustainable growth.



Continuous Improvement

We are committed to continuous improvement in our sustainable handling services solutions. We invest in research and development to stay ahead of industry trends and emerging technologies. By embracing innovation and continuous learning, we strive to provide our clients with cutting-edge, sustainable solutions that enhance efficiency and reduce environmental impact.



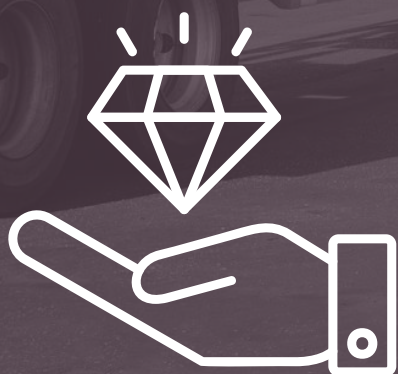
Circular Economy

We are champions of the circular economy, minimizing waste generation and promoting resource efficiency. Through innovative handling solutions, we aim to optimize material usage, reduce waste, and support recycling and upcycling initiatives. By closing the loop in our operations, we contribute to a more sustainable and resourceful future.



ALTECH

For Industrial Handling
Solutions



Our

Values

ALTECH

For Industrial Handling Solutions

V A L U E S

YOUR SUCCESS MOVEMENT ENGINE

Our team of experts is dedicated to providing the highest quality services, including commitment, responsibility, after sale services more

Maintenance Services



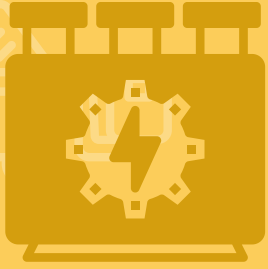
The Equipment Maintenance Service provides routine maintenance, emergency repairs, and comprehensive equipment overhauls to keep machinery and equipment in optimal condition, ensuring efficient operations and minimizing downtime. The experienced team of technicians uses the latest tools and techniques and offers flexible scheduling options to minimize disruption to business operations, enabling businesses to focus on running their operations.

Selling Spare parts



Altech company offers a wide range of high-quality spare parts to help you maintain your valuable machinery and equipment. Their skilled team is dedicated to providing the best products and services to keep your assets running smoothly, whether you need replacement parts for routine maintenance or unexpected repairs.

Selling Electrical Equipment



Electrical equipment is vital for power generation, automation, safety, energy efficiency, equipment operation and maintenance, integration with digital technologies, compliance with regulations, and adaptability in industrial settings. Its reliable and efficient functioning is critical for ensuring smooth operations, enhancing productivity, and achieving sustainable and safe industrial practices.

Rent Service




Get the equipment you need, when you need it, with our flexible and convenient equipment rental services. Whether it's for a short-term project or a long-term solution, we offer a wide range of high-quality equipment available for rent. Enjoy cost savings, flexibility, and access to the latest technology without the burden of ownership. Experience hassle-free equipment rentals tailored to your specific needs.

Charging Solutions



Electrical equipment is vital for power generation, automation, safety, energy efficiency, equipment operation and maintenance, integration with digital technologies, compliance with regulations, and adaptability in industrial settings. Its reliable and efficient functioning is critical for ensuring smooth operations, enhancing productivity, and achieving sustainable and safe industrial practices.

Electric Golf Carts



Get the equipment you need, when you need it, with our flexible and convenient equipment rental services. Whether it's for a short-term project or a long-term solution, we offer a wide range of high-quality equipment available for rent. Enjoy cost savings, flexibility, and access to the latest technology without the burden of ownership. Experience hassle-free equipment rentals tailored to your specific needs.



ABOUT

ALTECH GREEN

For Electrical Mobility Solutions

M o v e T o E c o - L i f e





**ALTECH
GREEN**

For Electrical Mobility Solutions

M o v e T o E c o - L i f e

Our Sister Company For Golf Carts Solutions

Based in Cairo

www.altechgreen.com



MOVE

TO ECO-LIFE



At **AltechGreen**, we are driven by our passion for sustainability and our belief in the power of green energy to transform the world. Our slogan, "Move to Eco-life," encapsulates our mission to help people make the switch to a more sustainable way of living. We believe that by working together, we can create a brighter, cleaner, and more sustainable future for ourselves and for generations to come.



Vision

To be MEA's most trusted electrical equipment maintenance service experts' provider, to make whole people's lives most sustainable and futuristic.



Mission

Enabling a sustainable future to become a reality for all people of society and at the level of business life, by providing technical support services and after-sales services such as providing spare parts, in addition to establishing, building, and operating located and mobile charging stations to support relying on electric energy in equipment, machinery, and engines of all kinds in MEA.



Our Solutions



Maintenance Services



Charging Solutions



Energy Infrastructure



Consultations Services



ALTECH

For Industrial Handling
Solutions

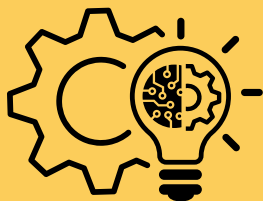


Our
Capabi-
lities

Our organization boasts a wide range of critical capabilities to cater to the varying requirements of our clientele.



Comprehensive
Product Portfolio



Technical
Expertise



Customization
Solutions



Cost
Effectiveness



Comprehensive Product Portfolio

A Comprehensive Products Portfolio is crucial in the industrial handling solutions field. It allows companies to provide a wide range of products and services to their customers, tailoring solutions to their specific needs.

This is why **Altech** company places great importance on maintaining such a portfolio. By doing so, they are able to offer a diverse range of products for industries such as food and beverage, material handling, and packaging.

Altech's commitment to their portfolio ensures that they can continue to provide innovative solutions that meet the ever-changing needs of their clients.



Customization Solutions

Customization solutions play a crucial role in the industrial handling solutions field. They enable companies to tailor their products and services to meet the unique needs of their customers.

Altech is a company that recognizes the importance of customization solutions and strives to provide them to its clients. By doing so, Altech ensures that its clients receive solutions that are specifically designed to meet their individual requirements, leading to greater efficiency and productivity.

Altech's commitment to customization solutions sets it apart from its competitors and makes it a valuable partner for companies in the industrial handling solutions field.



Technical Expertise

Technical expertise is crucial in the field of industrial handling solutions. Companies that specialize in this industry must have a deep knowledge of machinery, equipment, and processes to ensure efficient and safe handling of materials.

Altech is an example of a company that values technical expertise and strives to maintain it. Through continuous training and education, Altech's team of experts stay up-to-date with the latest advancements in industrial handling technology, enabling them to provide reliable and innovative solutions to their clients.



Cost Effectiveness

Cost effectiveness is an important factor in the industrial handling solutions field. Companies strive to find ways to minimize costs while still providing high-quality services.

Altech is one such company that recognizes the importance of cost effectiveness. We continuously work to improve their processes and technologies to keep their prices competitive without sacrificing quality.

By prioritizing cost effectiveness, **Altech** is able to provide efficient and reliable solutions to their customers while staying ahead of their competitors.



ALTECH

For Industrial Handling
Solutions



Our
Numbers

ALTECH

For Industrial Handling
Solutions



150+

Satisfy Client



15+

Trusted Vendor



2,858
+

Service Provided



ALTECH

For Industrial Handling
Solutions



Sample
Of Our
Customers

The
Covered Markets



FMCG



Pharmaceuticals



Automotive



Transportation



Logistics

ALTECH

For Industrial Handling
Solutions





ALTECH

For Industrial Handling
Solutions




Contact
Us



WHATEVER
YOUR
CHALLENGES
ARE,
FIND...





**553 Extension of
the sixth Industrial
Zone,
6th Of October,
Giza, Egypt.**

(+2)01212632565

**Info@
altech-eg.com**

www.altech-eg.com



ALTECH

For Industrial Handling Solutions

For more info,

Visit our website

www.altech-eg.com

Or scan this
code

